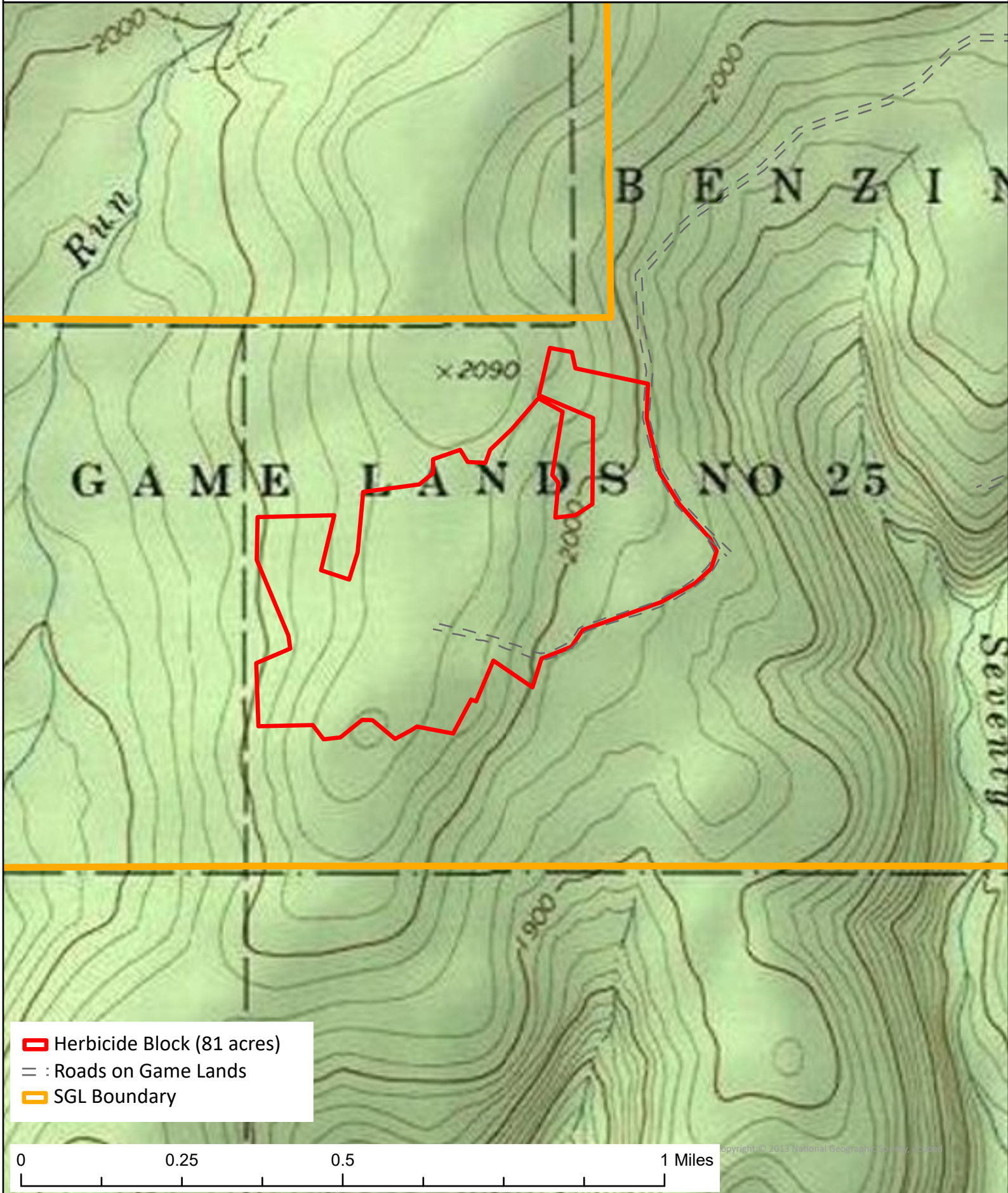

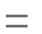



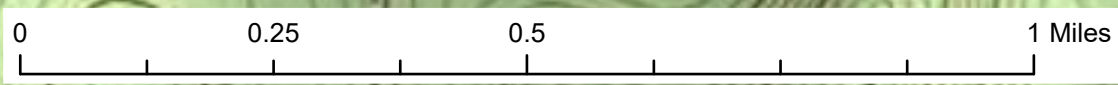


City Limits Herbicide (Steep Difficult)

State Game Land 025, Elk County, St. Mary's Township



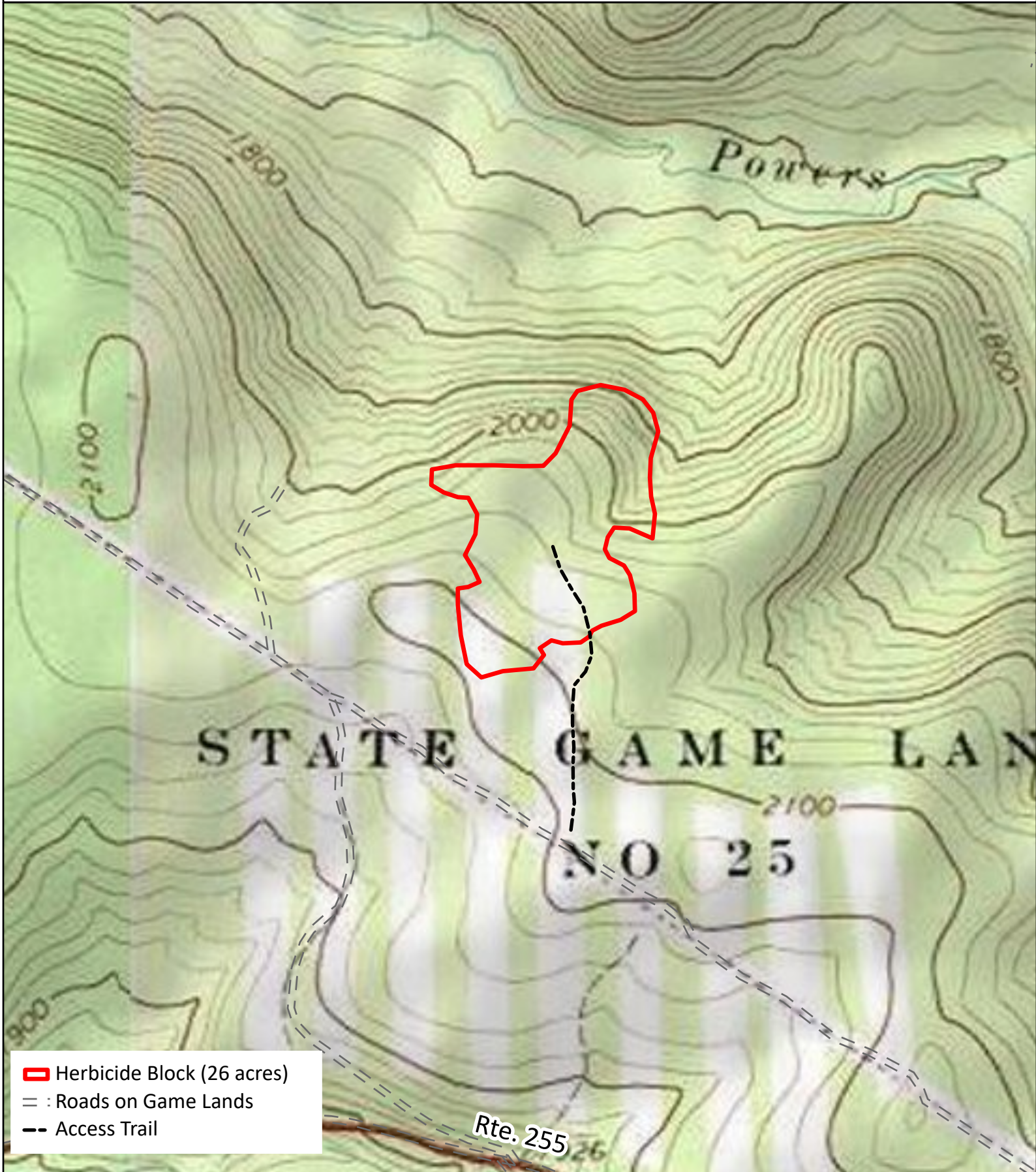
-  Herbicide Block (81 acres)
-  : Roads on Game Lands
-  SGL Boundary






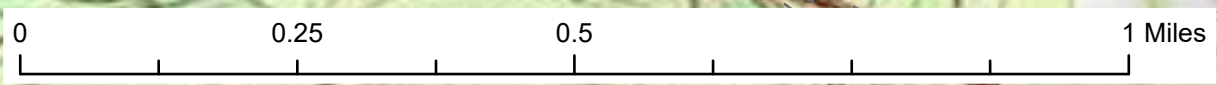


Jake Brake Herbicide (Drone)

State Game Land 025, Elk County, St. Mary's Township



-  Herbicide Block (26 acres)
-  : Roads on Game Lands
-  -- Access Trail



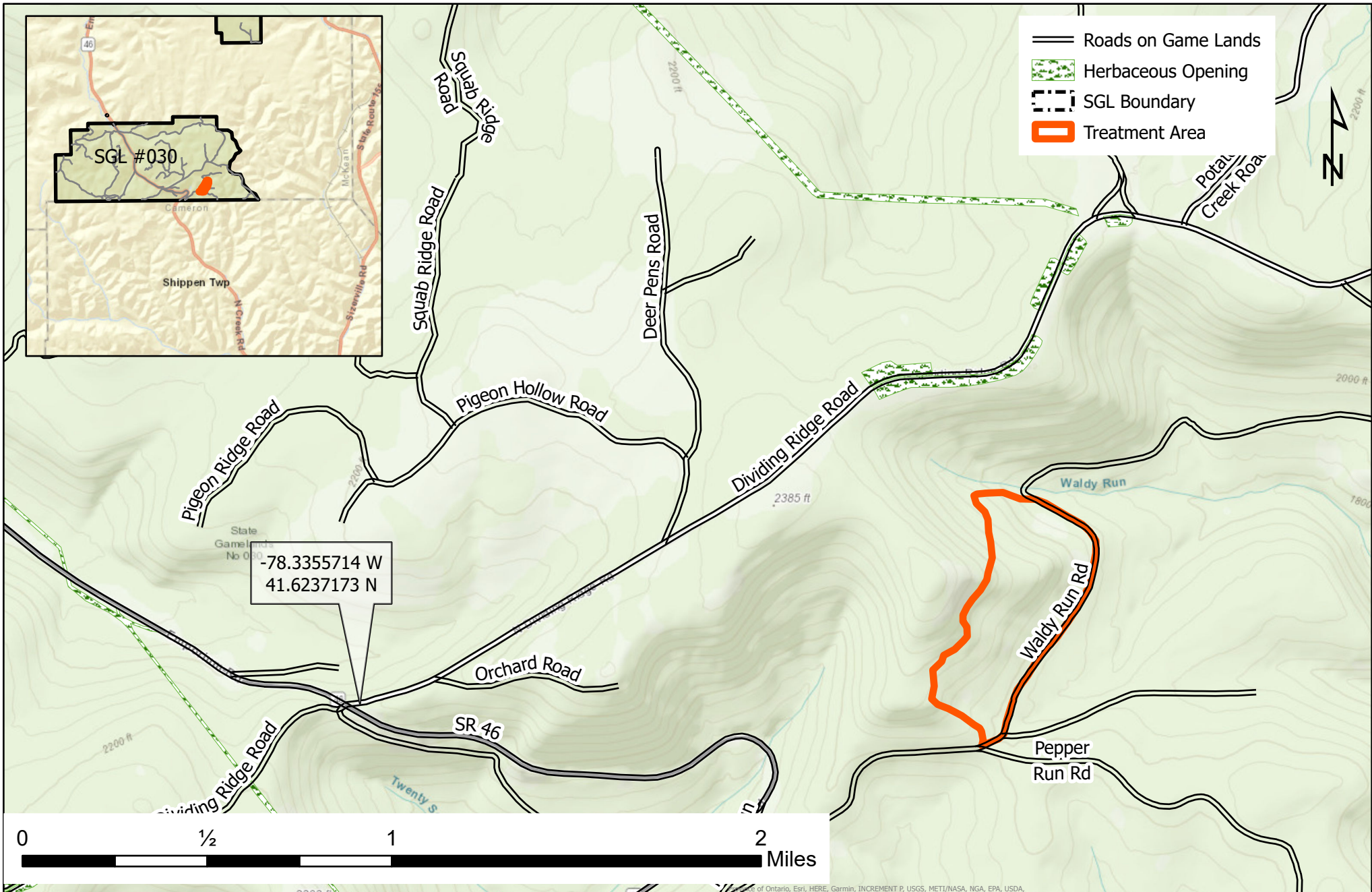
13 National Geographic Society, I-cubed

SGL # 030 Steep Difficult Herbicide



Norwich Township McKean County

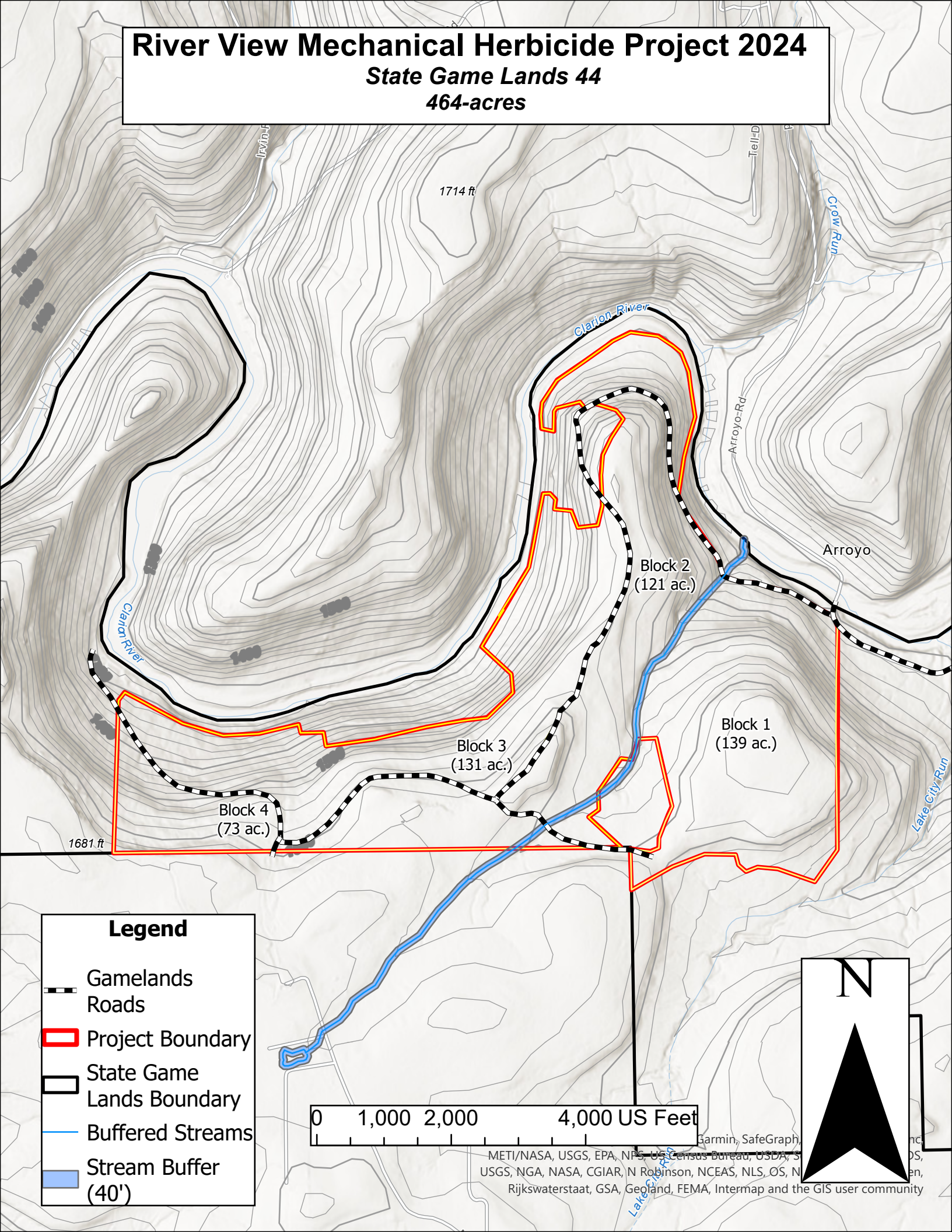
56 Acres








River View Mechanical Herbicide Project 2024

State Game Lands 44

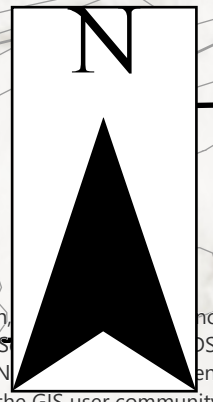
464-acres



Legend

-  Gamelands Roads
-  Project Boundary
-  State Game Lands Boundary
-  Buffered Streams
-  Stream Buffer (40')

0 1,000 2,000 4,000 US Feet



Garmin, SafeGraph, METI/NASA, USGS, EPA, NPS, US Census Bureau, USDA, S, USGS, NGA, NASA, CGIAR, N Robinson, NCEAS, NLS_OS, N, Rijkswaterstaat, GSA, Geoland, FEMA, Intermap and the GIS user community